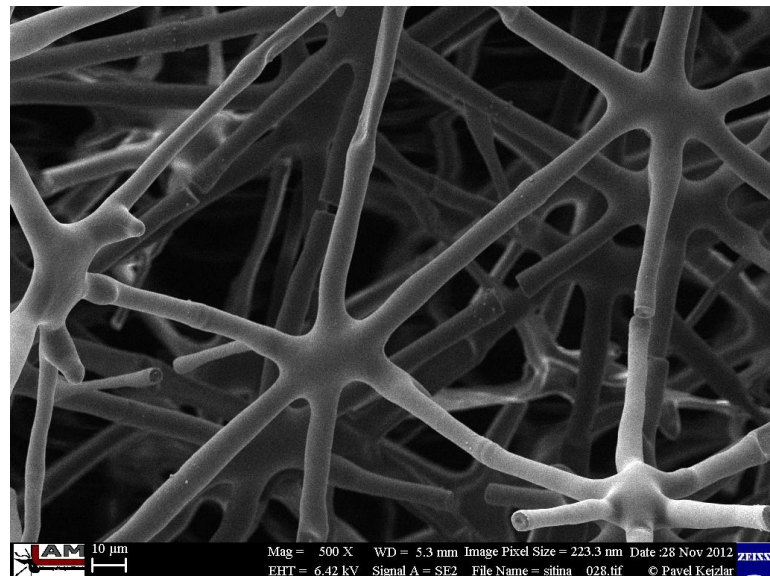
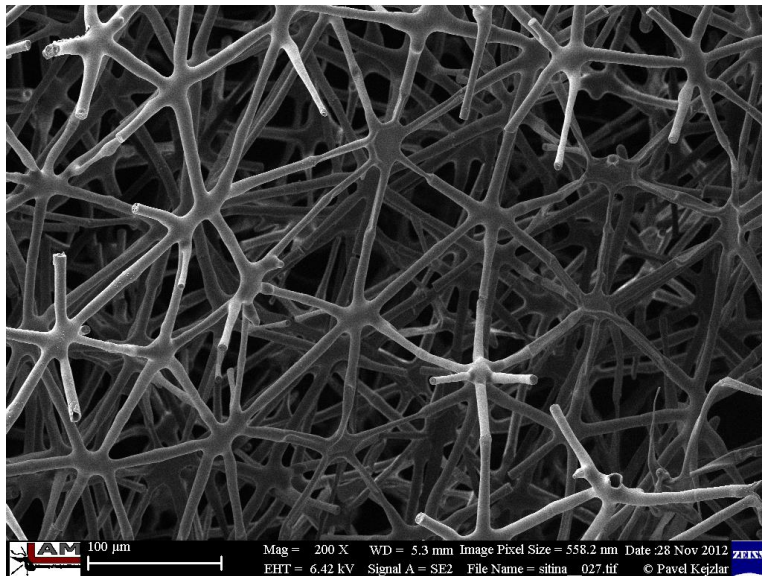
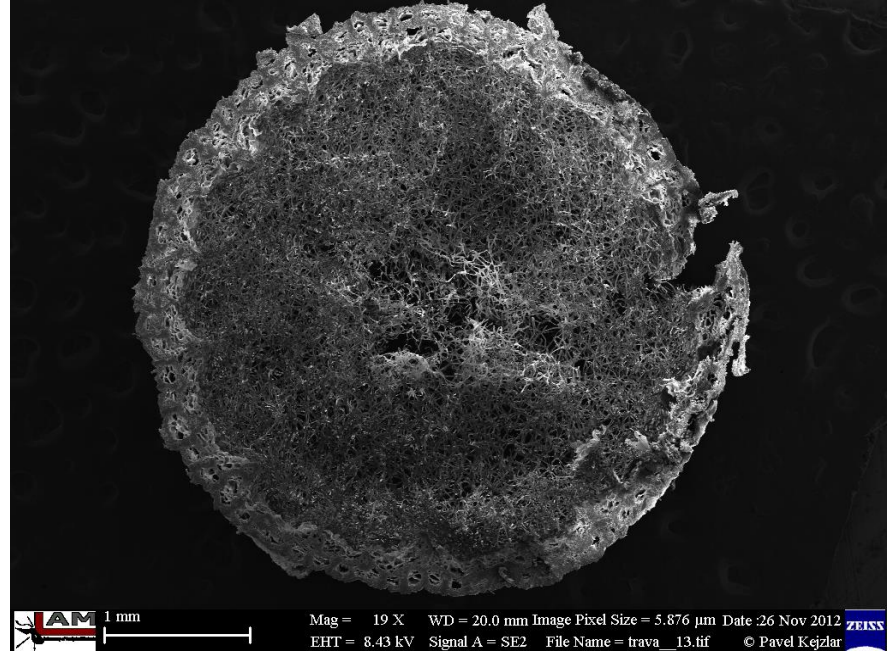
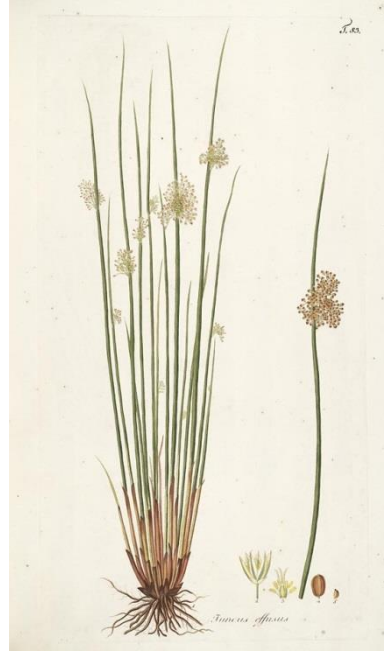
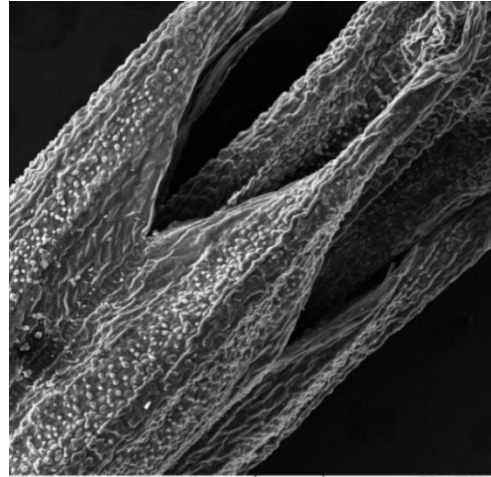


# Sítina rozkladitá – aerenchymatická vnitřní struktura

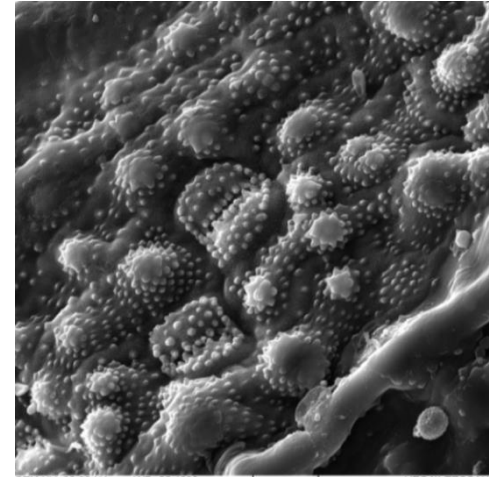




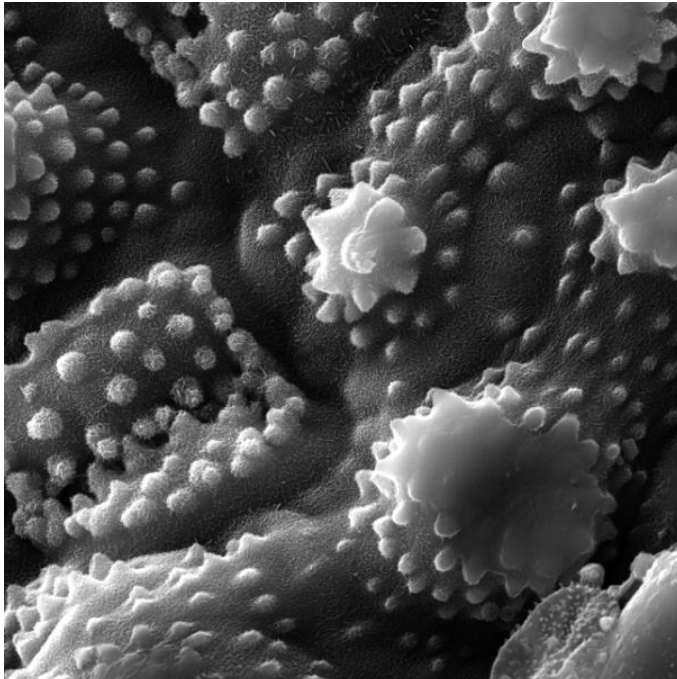
# Přeslička rolní - povrchové útvary z oxidu křemičitého – ochrana rostlin



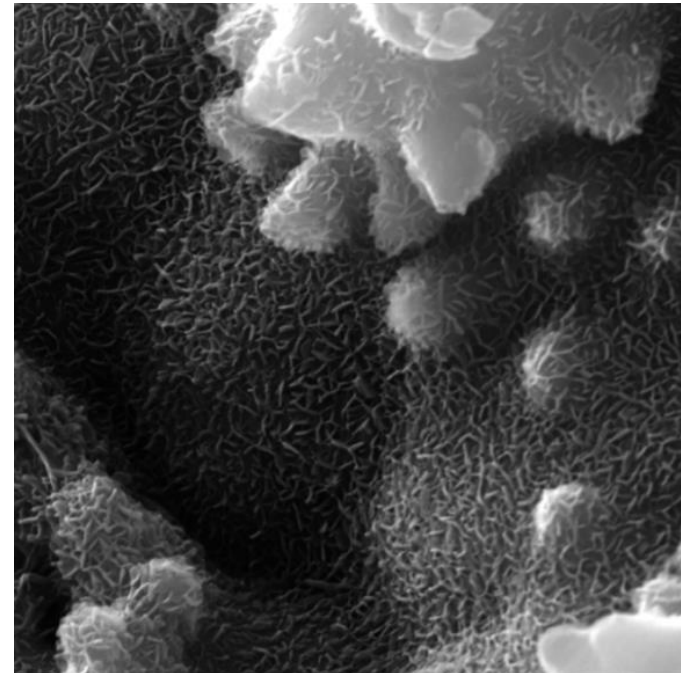
SEM HV: 30.00 kV WD: 26.1900 mm  
SEM MAG: 200 x Det: SE Detector  
Date(m/d/y): 10/08/10 pavel  
200 µm  
VEGA\\ TESCAN  
Digital Microscopy Imaging



SEM HV: 30.00 kV WD: 26.1900 mm  
SEM MAG: 2.00 kx Det: SE Detector  
Date(m/d/y): 10/08/10 pavel  
20 µm  
VEGA\\ TESCAN  
Digital Microscopy Imaging



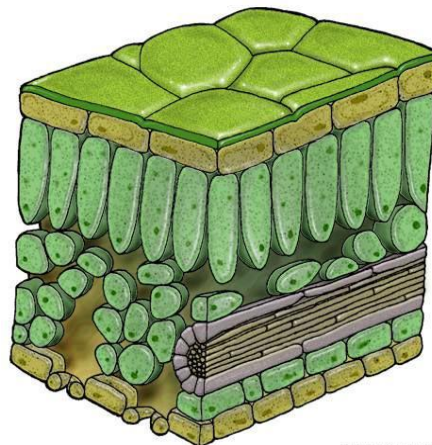
SEM HV: 30.00 kV WD: 14.8150 mm  
SEM MAG: 5.00 kx Det: SE Detector  
Date(m/d/y): 10/08/10 pavel  
10 µm  
VEGA\\ TESCAN  
Digital Microscopy Imaging



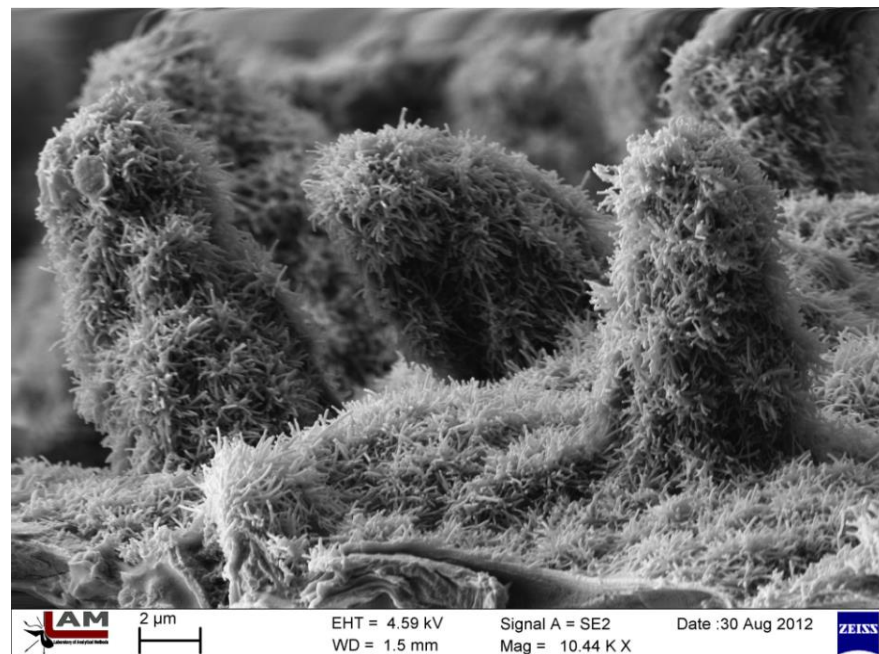
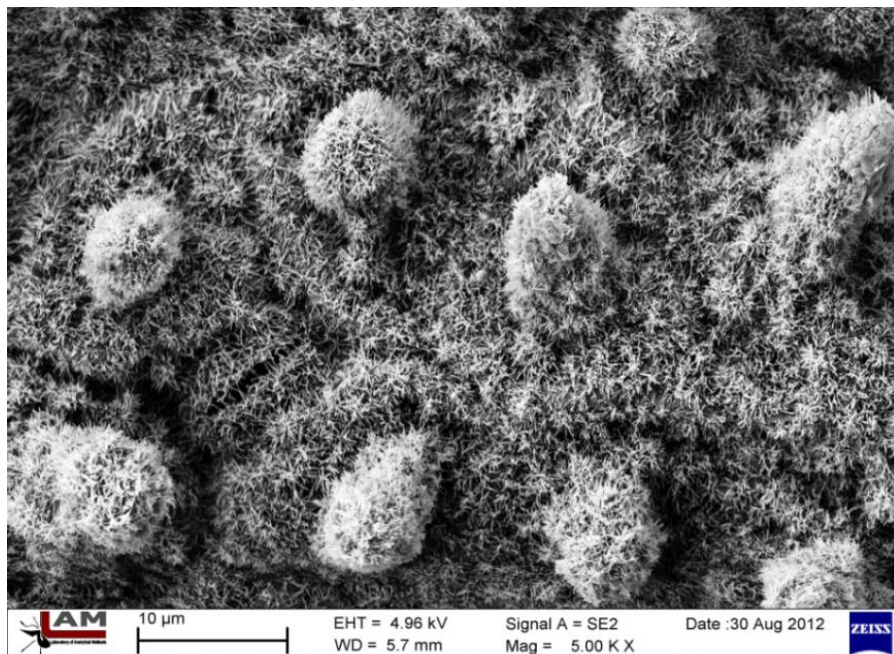
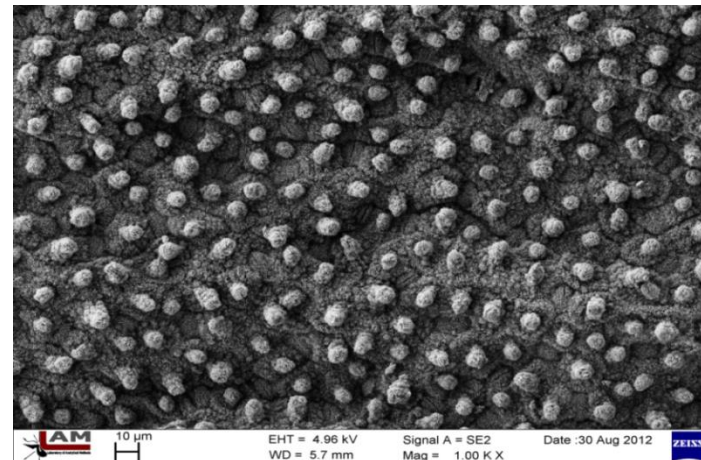
SEM HV: 30.00 kV WD: 14.8150 mm  
SEM MAG: 20.00 kx Det: SE Detector  
Date(m/d/y): 10/08/10 pavel  
2 µm  
VEGA\\ TESCAN  
Digital Microscopy Imaging



# Lotosový list – lotosový jev – samočisticí schopnosti rostlin

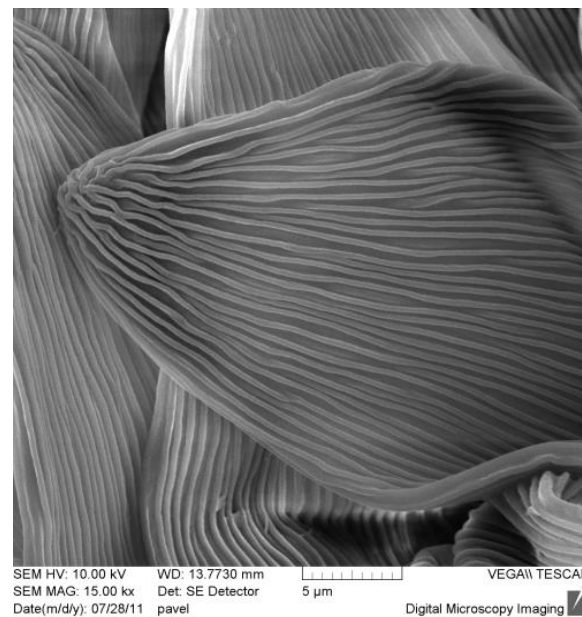
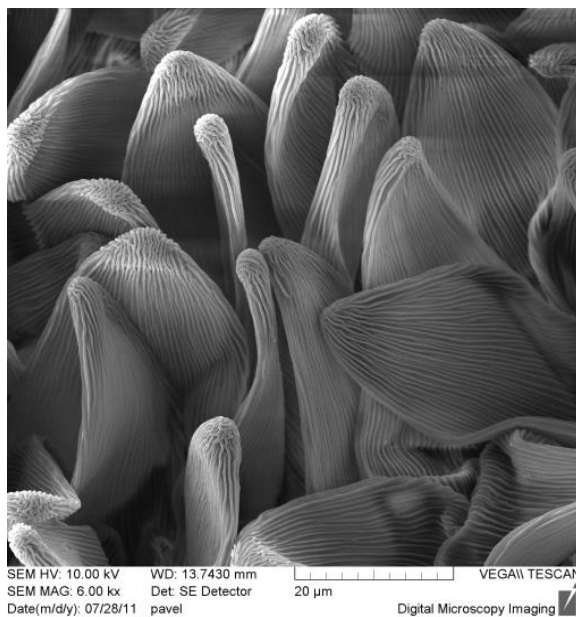
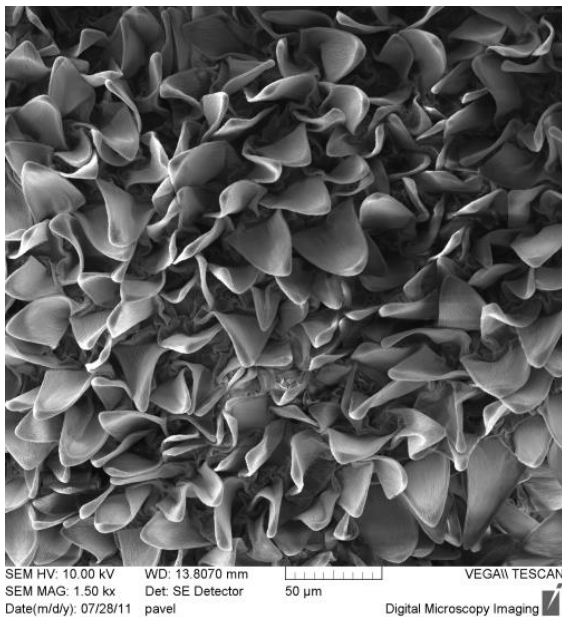
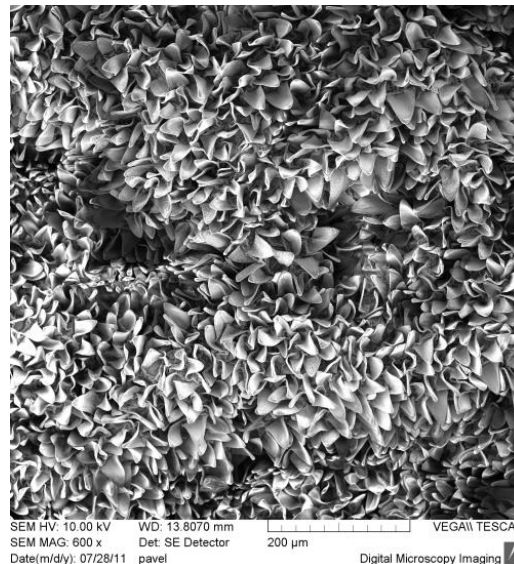


© Digital Frog International

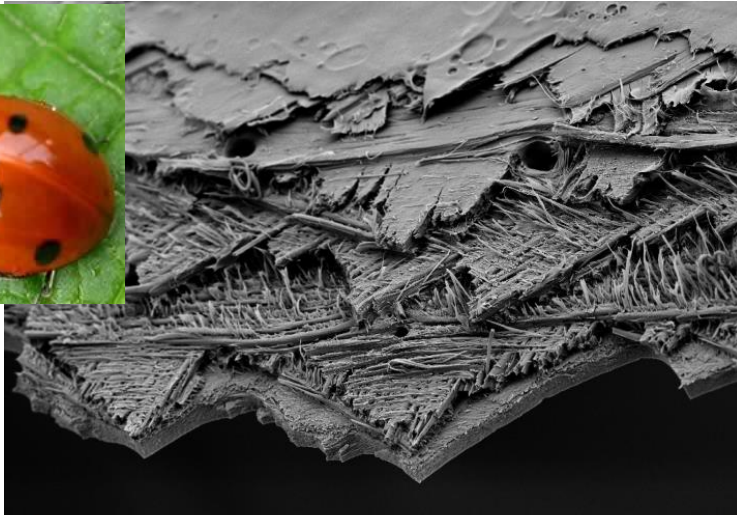




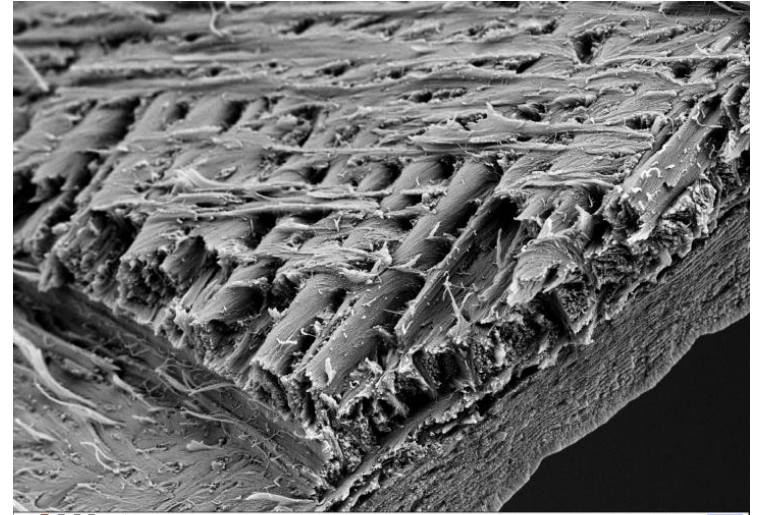
# Maceška zahradní - sametový vzhled - nesmáčivý povrch květu



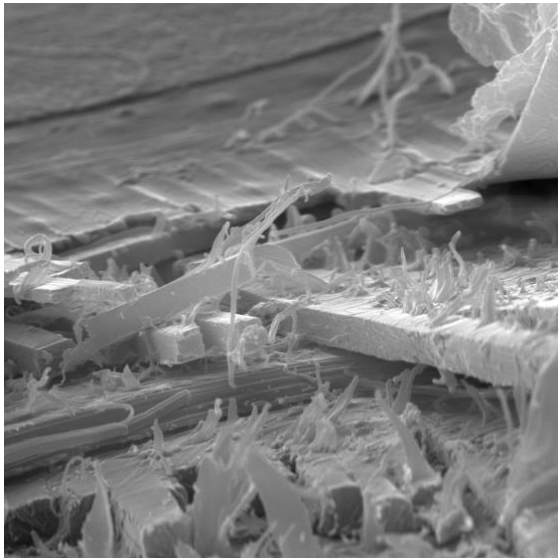




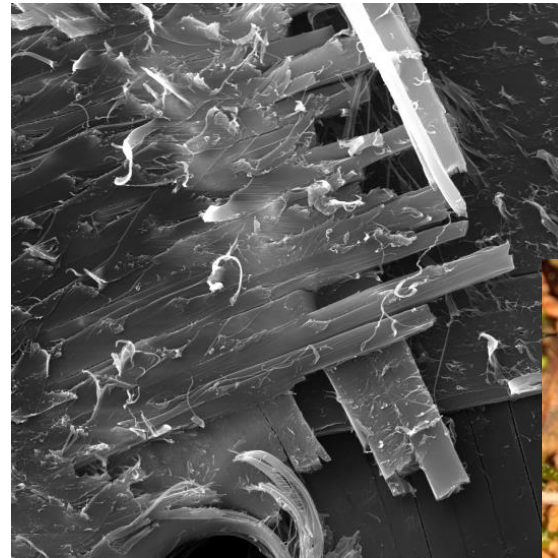

 10 μm      EHT = 4.59 kV      Signal A = SE2      Date :23 Aug 2012        
 WD = 4.9 mm      Mag = 2.23 K X




 1 μm      EHT = 4.59 kV      Signal A = SE2      Date :23 Aug 2012        
 WD = 4.8 mm      Mag = 14.62 K X



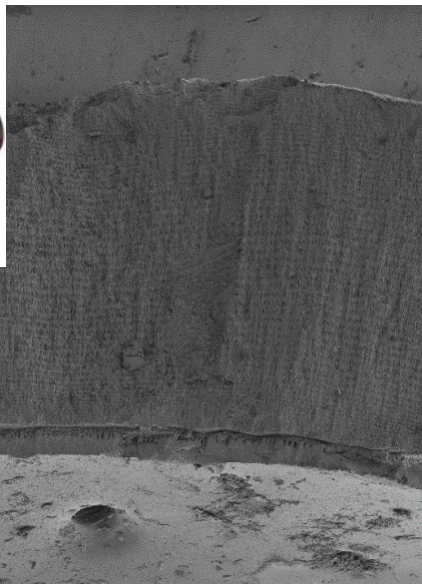
SEM HV: 30.00 kV      WD: 10.1160 mm            VEGA|| TESCAN  
 SEM MAG: 5.79 kx      Det: SE Detector      10 μm  
 Date(m/d/y): 12/03/09      Digital Microscopy Imaging 



SEM HV: 30.00 kV      WD: 14.8470 mm            VEGA|| TESCAN  
 SEM MAG: 4.90 kx      Det: SE Detector      20 μm  
 Date(m/d/y): 11/19/10      pavel      Digital Microscopy Imaging 



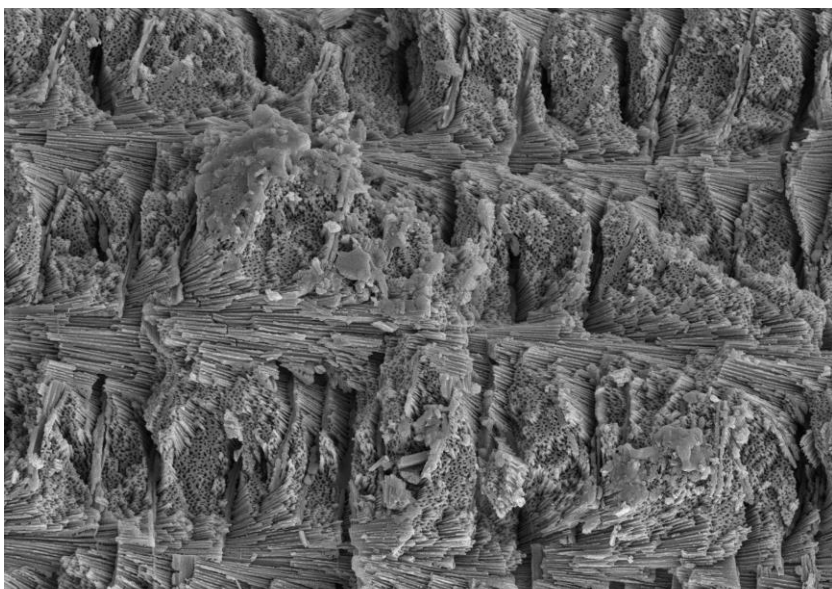




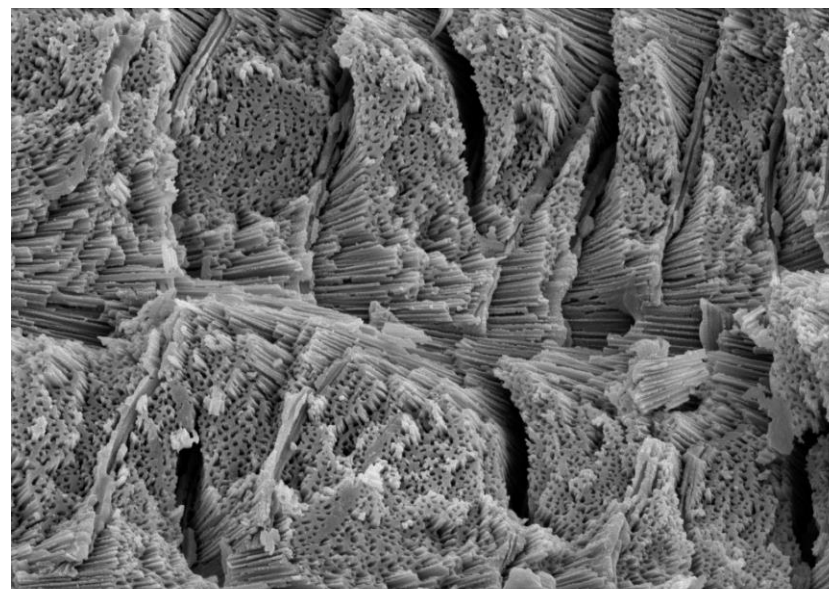
100  $\mu\text{m}$  Mag = 65 X EHT = 5.00 kV Scan Speed = 8 Laboratory of Analytical Methods  
WD = 13.1 mm Signal A = SE2 Date : 5 Mar 2014 © Pavel Kejzlar, CxI - TUL ZEISS



10  $\mu\text{m}$  Mag = 2.04 K X EHT = 5.00 kV Scan Speed = 5 Laboratory of Analytical Methods  
WD = 12.8 mm Signal A = SE2 Date : 5 Mar 2014 © Pavel Kejzlar, CxI - TUL ZEISS



2  $\mu\text{m}$  Mag = 5.00 K X EHT = 5.00 kV Scan Speed = 5 Laboratory of Analytical Methods  
WD = 12.8 mm Signal A = SE2 Date : 5 Mar 2014 © Pavel Kejzlar, CxI - TUL ZEISS



1  $\mu\text{m}$  Mag = 10.00 K X EHT = 5.00 kV Scan Speed = 5 Laboratory of Analytical Methods  
WD = 12.8 mm Signal A = SE2 Date : 5 Mar 2014 © Pavel Kejzlar, CxI - TUL ZEISS



# Písečná ryba – neabrazivní povrch těla

